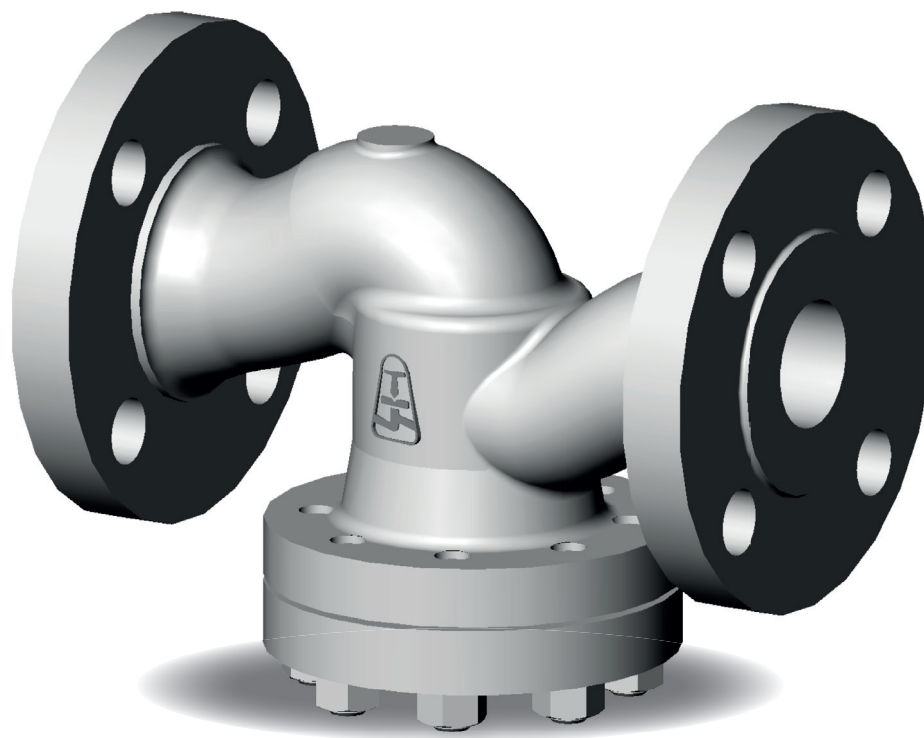




HIGH-PRESSURE STRAINER D30

PN 63–160; DN 50–150, T_{MAX} : 550°C



HIGH-PRESSURE STRAINER D30

APPLICATION

- water, steam, gas, oil, petroleum, non-aggressive substances

CONNECTION

- flanged, weld ends

OPERATION

- without operation

DESCRIPTION

- direct design
- drain plug
- strainer – standard range of holes (mesh) 23 to 600 meshes/inch
- complies with the requirements of the directive 2014/68/EU
- testing is carried out according to standard EN 12266-1, part 2

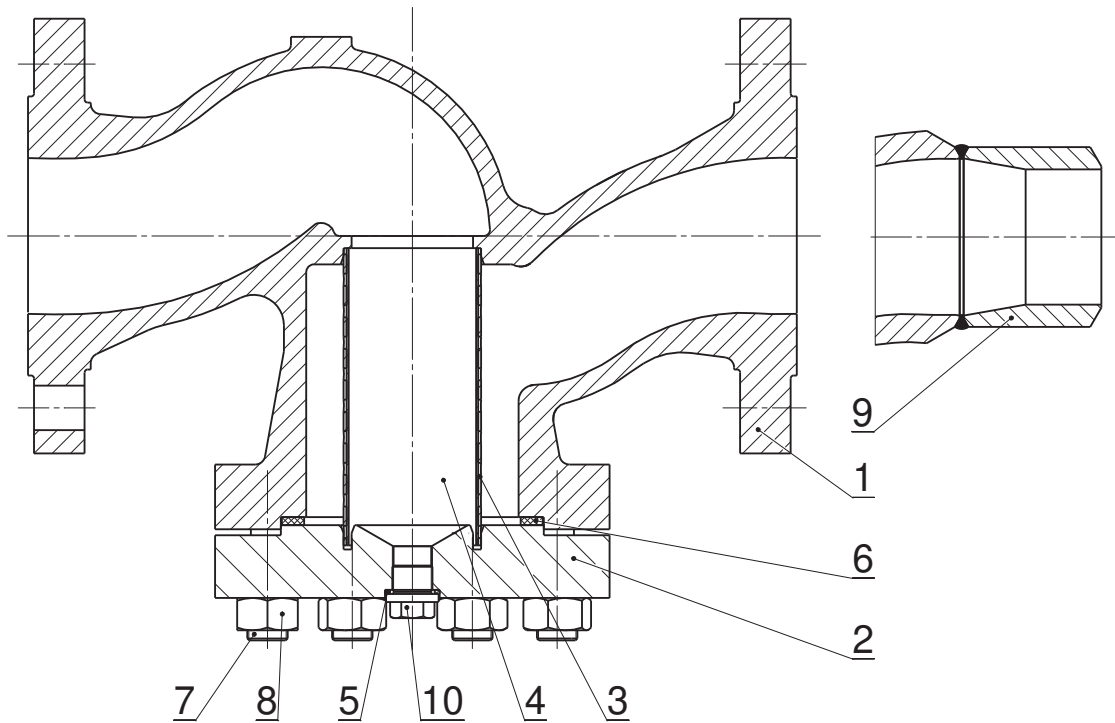
BASIC DESIGN OPTIONS

- welding ends from forged materials
- according to TRD 201

PRESSURE-TEMPERATURE-RATINGS

| Material | PN | Admissible operating pressure PS [bar] at operating temperature TS [°C] | | | | | | | | | | | | | | | | |
|------------------------|-----|---|-----|-----|-----|-----|-----|-----|-----|-----|-----|-----|-----|-----|-----|------|------|------|
| | | -10 | 50 | 100 | 150 | 200 | 250 | 300 | 350 | 400 | 450 | 475 | 500 | 510 | 520 | 530 | 540 | 550 |
| GP240GH (1.0619) | 63 | 63 | 63 | 59 | 55 | 48 | 45 | 41 | 38 | 36 | 35 | - | - | - | - | - | - | - |
| | 100 | 100 | 100 | 93 | 87 | 76 | 71 | 64 | 60 | 58 | 55 | - | - | - | - | - | - | - |
| | 160 | 160 | 160 | 149 | 136 | 124 | 113 | 103 | 96 | 92 | 89 | - | - | - | - | - | - | - |
| G17CrMo5-5 (1.7357) | 63 | 63 | 63 | 63 | 63 | 63 | 62 | 57 | 53 | 51 | 48 | 47 | 38 | 33 | 26 | 24,4 | 18,1 | 13,7 |
| | 100 | 100 | 100 | 100 | 100 | 100 | 98 | 91 | 84 | 80 | 76 | 75 | 61 | 52 | 42 | 38,7 | 28,7 | 21,8 |
| | 160 | 160 | 160 | 160 | 160 | 160 | 160 | 160 | 152 | 146 | 139 | 127 | 118 | 97 | 79 | 62 | 46 | 35 |

USED MATERIALS



| Pos. | Part | Material | |
|------|----------|--------------------------------|-----------------------------------|
| 1 | Body | GP240GH (1.0619) | G17CrMo5-5 (1.7357) |
| 2 | Cover | 13CrMo4-5 (1.7335) | |
| 3, 4 | Strainer | X5CrNi18-10 (1.4301) | |
| 5 | Gasket | ST/Isoplán | |
| 6 | Gasket | Grafit | |
| 7 | Bolt | 21CrMoV5-7 (1.7709) | |
| 8 | Nut | 25CrMo4 (1.7218) | 21CrMoV5-7 (1.7709) |
| 9 | Branch | P250GH; 16Mo3 (1.0460; 1.5415) | 16Mo3; 13CrMo4-5 (1.5415; 1.7335) |
| 10 | Plug | 21CrMoV5-7 (1.7709) | |

VALVE DIMENSIONS

1. Flanged

Face-to-face dimensions:

EN 558 – line 2

Flanges:

EN 1092-1

2. Weld ends

Face-to-face dimensions:

as per table EN 12 982 – line 65 DIN 3202 – part2 – line S3, DN50 = 260 mm

Face-to-face dimensions with branches:

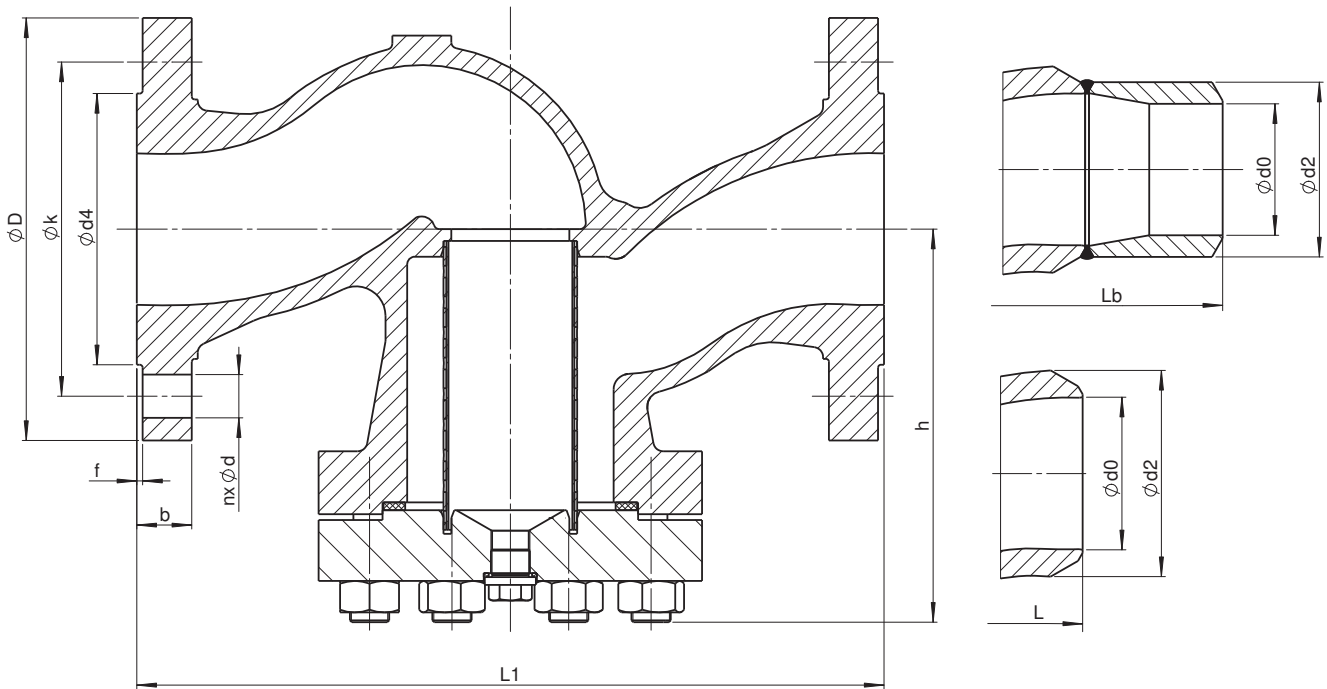
as per table (Lb) or on request

Dimensions of welding ends:

DIN 3239 – part 1

Groove form:

DIN 2559 – sheet 1 – form 22



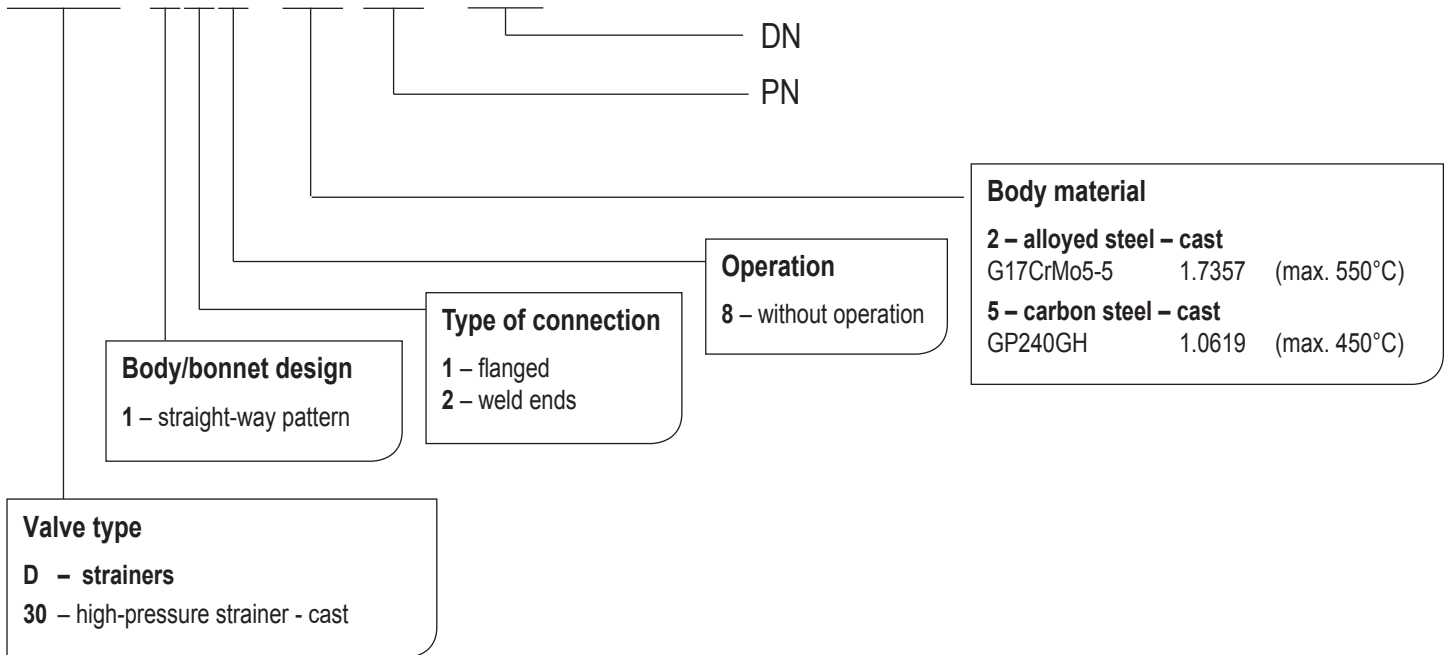


| Nominal pressure | Nominal size | Centre-to-top-height | Flanged | | | | | | | | Weld ends | | | | | Filter screen ¹⁾ | |
|------------------|--------------|----------------------|---------|----|--------|---------|-----|--------|--------|--------|-----------|-----------|--------|--------|---------|-----------------------------|----------|
| | | | PN | DN | h [mm] | L1 [mm] | n | d [mm] | k [mm] | D [mm] | b [mm] | d4xf [mm] | m [kg] | L [mm] | Lb [mm] | | d2 [mm] |
| 63 | 50 | 150 | 300 | 4 | 22 | 135 | 180 | 26 | 102×3 | 24 | 260 | 400 | 61 | 54 | 14 | 60,3×3,2 | 0,4×0,23 |
| | 65 | 175 | 340 | 8 | 22 | 160 | 205 | 26 | 122×3 | 35 | 340 | 480 | 77 | 69 | 25 | 76,1×3,6 | 0,4×0,23 |
| | 80 | 200 | 380 | 8 | 22 | 170 | 215 | 28 | 138×3 | 42 | 380 | 520 | 90 | 81 | 31 | 88,9×4,0 | 0,4×0,23 |
| | 100 | 225 | 430 | 8 | 26 | 200 | 250 | 30 | 162×3 | 63 | 430 | 570 | 115 | 104 | 48 | 114,3×5,0 | 0,4×0,23 |
| | 125 | 240 | 500 | 8 | 30 | 240 | 295 | 34 | 188×3 | 87 | 500 | 650 | 141 | 130,5 | 62 | 139,7×4,5 | 1×0,5 |
| | 150 | 275 | 550 | 8 | 33 | 280 | 345 | 36 | 218×3 | 140 | 550 | 710 | 170 | 156,5 | 83 | 168,3×5,6 | 1,6×0,5 |
| 100 | 50 | 150 | 300 | 4 | 26 | 145 | 195 | 28 | 102×3 | 26 | 260 | 400 | 61 | 54 | 14 | 60,3×3,2 | 0,4×0,23 |
| | 65 | 175 | 340 | 8 | 26 | 170 | 220 | 30 | 122×3 | 39 | 340 | 480 | 77 | 69 | 25 | 76,1×3,6 | 0,4×0,23 |
| | 80 | 200 | 380 | 8 | 26 | 180 | 230 | 32 | 138×3 | 49 | 380 | 520 | 90 | 81 | 31 | 88,9×4,0 | 0,4×0,23 |
| | 100 | 225 | 430 | 8 | 30 | 210 | 265 | 36 | 162×3 | 74 | 430 | 570 | 115 | 104 | 48 | 114,3×5,0 | 0,4×0,23 |
| | 125 | 240 | 500 | 8 | 33 | 250 | 315 | 40 | 188×3 | 101 | 500 | 650 | 141 | 127 | 62 | 139,7×6,3 | 1×0,5 |
| | 150 | 275 | 550 | 12 | 33 | 290 | 355 | 44 | 218×3 | 144 | 550 | 710 | 170 | 154 | 83 | 168,3×7,1 | 1,6×0,5 |
| 160 | 50 | 150 | 300 | 4 | 26 | 145 | 195 | 30 | 102×3 | 28 | 260 | 400 | 61 | 52,5 | 15 | 60,3×4 | 0,4×0,23 |
| | 65 | 175 | 340 | 8 | 26 | 170 | 220 | 34 | 122×3 | 43 | 340 | 480 | 77 | 65 | 26 | 76,1×5,6 | 0,4×0,23 |
| | 80 | 200 | 380 | 8 | 26 | 180 | 230 | 36 | 138×3 | 53 | 380 | 520 | 90 | 76,5 | 32 | 88,9×6,3 | 0,4×0,23 |
| | 100 | 225 | 430 | 8 | 30 | 210 | 265 | 40 | 162×3 | 78 | 430 | 570 | 115 | 98,5 | 49 | 114,3×8 | 0,4×0,23 |
| | 125 | 240 | 500 | 8 | 33 | 250 | 315 | 44 | 188×3 | 105 | 500 | 650 | 141 | 120,5 | 63 | 139,7×10 | 1×0,5 |
| | 150 | 275 | - | 12 | 33 | 290 | 355 | 50 | 218×3 | 149 | 550 | 710 | 170 | 144,5 | 84 | 168,3×12,5 | 1,6×0,5 |

1) Other sizes of filter screen upon customer request

VALVE DESCRIPTION CODE

D30 118–2100–50



VALVE INSTALLATION

Valve must always be installed in the line position – plug down. Medium correspondence with the arrow marked on the valve body. Installation and use the valve following points have to be respected:

- operating conditions must comply with operating parameters of the valve
- proper function of the valve is affected by the presence of impurities in the pipeline and flowing medium
- medium used must comply with the corrosion resistance of the valve material
- use of mechanically damaged valves during the operation is prohibited

The service life of valves significantly extends regular maintenance and minor repairs carried out by trained personnel.