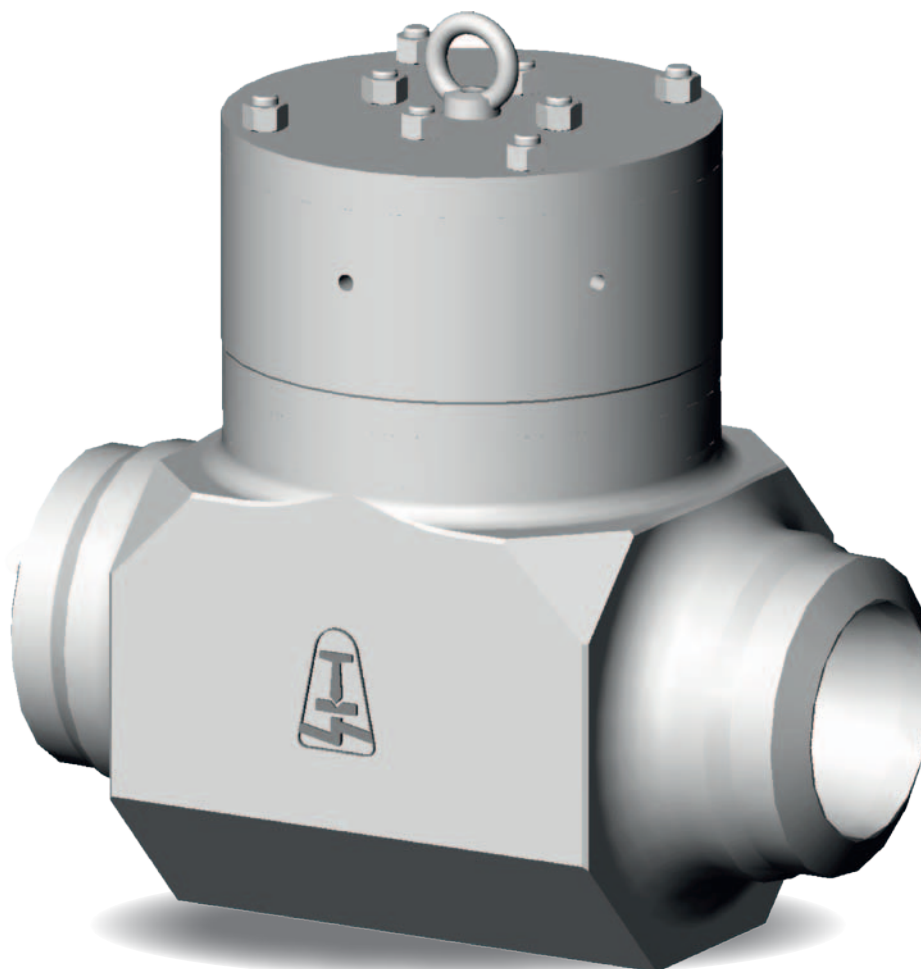




SWING CHECK VALVE L43

PN 160–320; DN 50/50–350/275; T_{MAX} : 600 °C



SWING CHECK VALVE L43

APPLICATION

- water, steam, gases and other substances used in power engineering, chemical industry and other industries

CONNECTION

- flanged, weld ends

OPERATION

- self-acting control

DESCRIPTION

- self-sealing bonnet
- sealing surface is welded by Stellite 6
- complies with the requirements of directive 2014/68/EU
- testing is carried out according to standard EN 12266-1, part 2

BASIC DESIGN OPTIONS

- with by-pass

